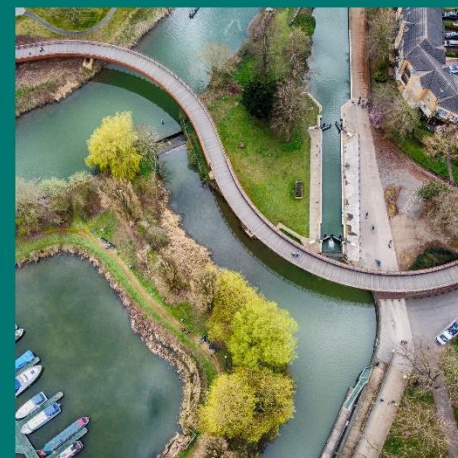


An update on the development of the ICP Outcomes Framework

FIRST ITERATION (DRAFT V7.1)



Context

- In order to influence the first 5-year joint forward plan Northamptonshire ICS has to publish an initial strategy by December 2022.
- The integrated care strategy is an opportunity to work with a wide range of people, communities and organisations to develop evidence-based system-wide priorities that will improve the public's health and wellbeing and reduce disparities.
- Agreement by all actors within the integrated care system on **priority outcomes, based on the needs identified in the joint strategic needs assessments**, is a powerful way for the integrated care strategy to bring focus to the system, galvanising joint working and driving progress on the most important outcomes for the local population.

"We expect this to be an important aspect of all integrated care strategies, which can also play an important role in supporting the setting of joint goals for local areas"

Development Process

1. As a starting point we have taken the 2020/21 **NHCP Outcomes Framework (NHCPOF) metrics** (process below) and mapped them to the 10 new ICP “**Live Your Best Life**” (**LYBL Ambitions**)
2. Work within the PH team has then been to articulate specific outcomes (based on known needs in existing JSNA documents) to describe the 10 LYBL ambitions and find nationally bench-marked metrics to measure outcomes where there are gaps in the NHCPOF
3. Through July and August we will engage with service areas, topic experts and system leaders to refine outcomes and metrics selected (iterative process), mapping of selected metrics against existing corporate/organisational scorecards/frameworks to ensure all partners aligned in achieving population outcomes selected

live your best life

Best Start in Life

Access to the best available education and learning

Opportunity to be fit, well and independent

Employment that keeps them and their families out of poverty

Housing that is affordable, safe, and sustainable in places which are clean and green

To feel safe in their homes and when out and about

Connected to their families and friends

The chance for a fresh start when things go wrong

Access to health and social care when they need it

To be accepted and valued simply for who they are

Principles

- Outcomes should reflect local priorities as identified in existing needs assessments (also using any new insights identified by stakeholders)
- Outcomes should reflect existing strategic outcomes for partners that require whole system partnership working to effect meaningful change
- Outcomes should be balanced between those focusing on health and care service delivery with those focused on wider and social determinants of health
- Metrics measuring each outcome should be high level to inform the strategic-level board, with more nuanced and granular detail contained in supporting “scorecards”.
- Reducing inequalities should be a “golden thread” throughout (inc. reflecting CORE20PLUS5)

N.B. metrics selected are *currently available* data/measures though we recognise that new local measures should be developed as part of this work.

Stakeholder Engagement

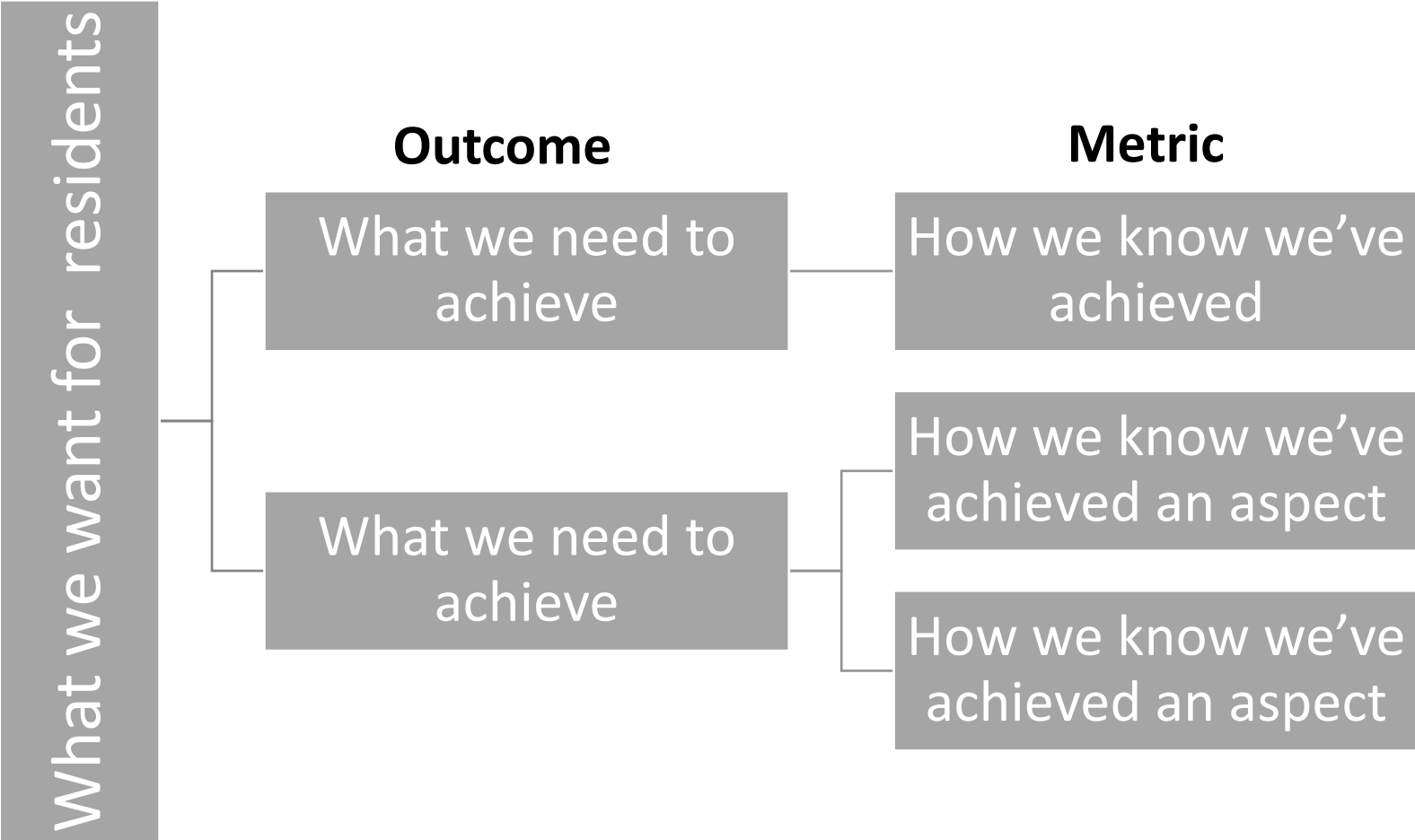
- The team have engaged stakeholders across the local authorities, NHS, voluntary sector, and other key organisations e.g. University of Northampton.
- Stakeholders were asked for feedback on both outcomes and their wording as well as selected metrics and sources of data to measure selected outcomes.
- Given the tight timescales for engagement, there are partners from whom feedback has not yet been collected/collated.
- This version presented is therefore subject to minor amendments in response to this feedback.
- Feedback from HWBs is welcomed.

Timescales

- June 2022 – initial draft for stakeholder engagement finalised
- July 2022 – stakeholder engagement
- August 2022– stakeholder engagement
- September 2022 – final draft of first iteration to be presented to Heath and Wellbeing Boards for endorsement before presentation to Partnership Board
- **December 2022 – final draft** of ICS Strategy including Outcome Framework presented
- April 2023 – government publication of Outcomes Framework Guidance
Iterative process of refining the Outcomes Framework continues

Framework Structure

Ambition



Ambition

Best start in Life

Outcome

Metric

Pregnant women are healthy and well

% women obese in early pregnancy

% target number of women accessing specialist perinatal mental health services

% women smoking at time of delivery

Children are healthy from birth and develop well

% babies with low birth weight at term (<2.5kg)

Neonatal mortality and stillbirth rate (per 1000)

% breastfeeding at 6-8 weeks

Children are equipped to start school

% good level of development at end Yr R

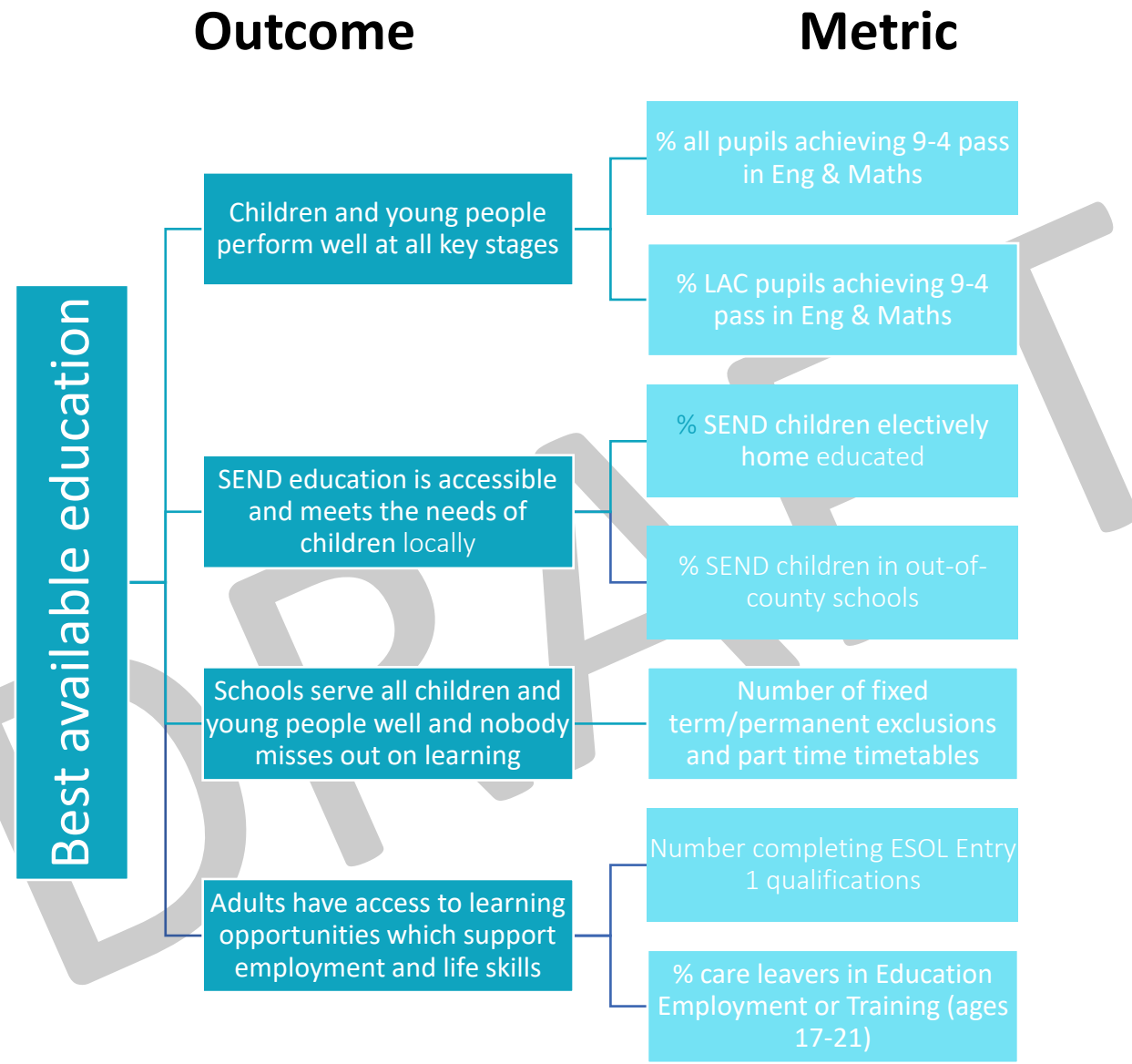
Looked after children are healthy and well

% of Children in Care with an up to date Review health assessment

% looked after children with three or more placements in the previous 12 months

% re-referral to social care within 3 months

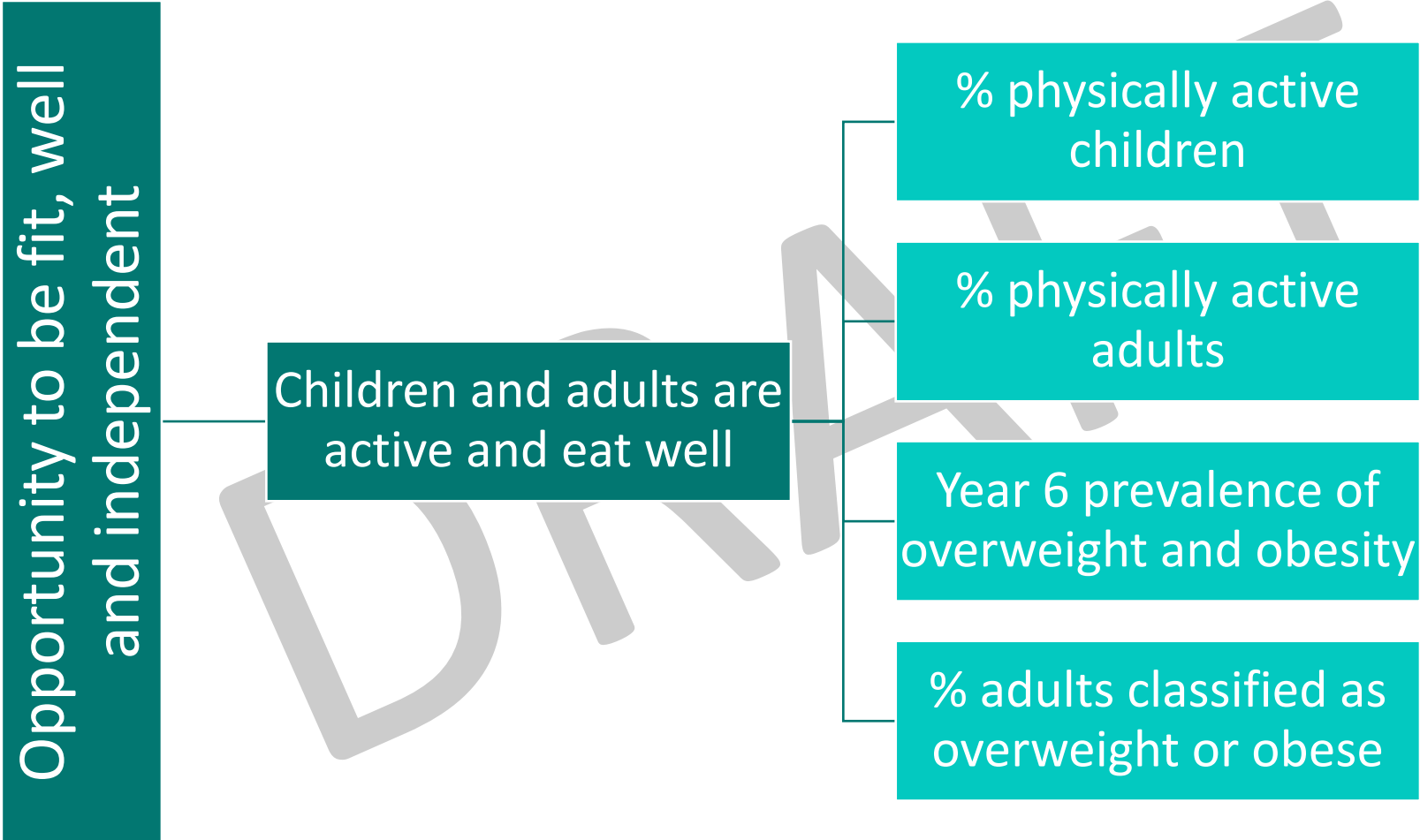
Ambition

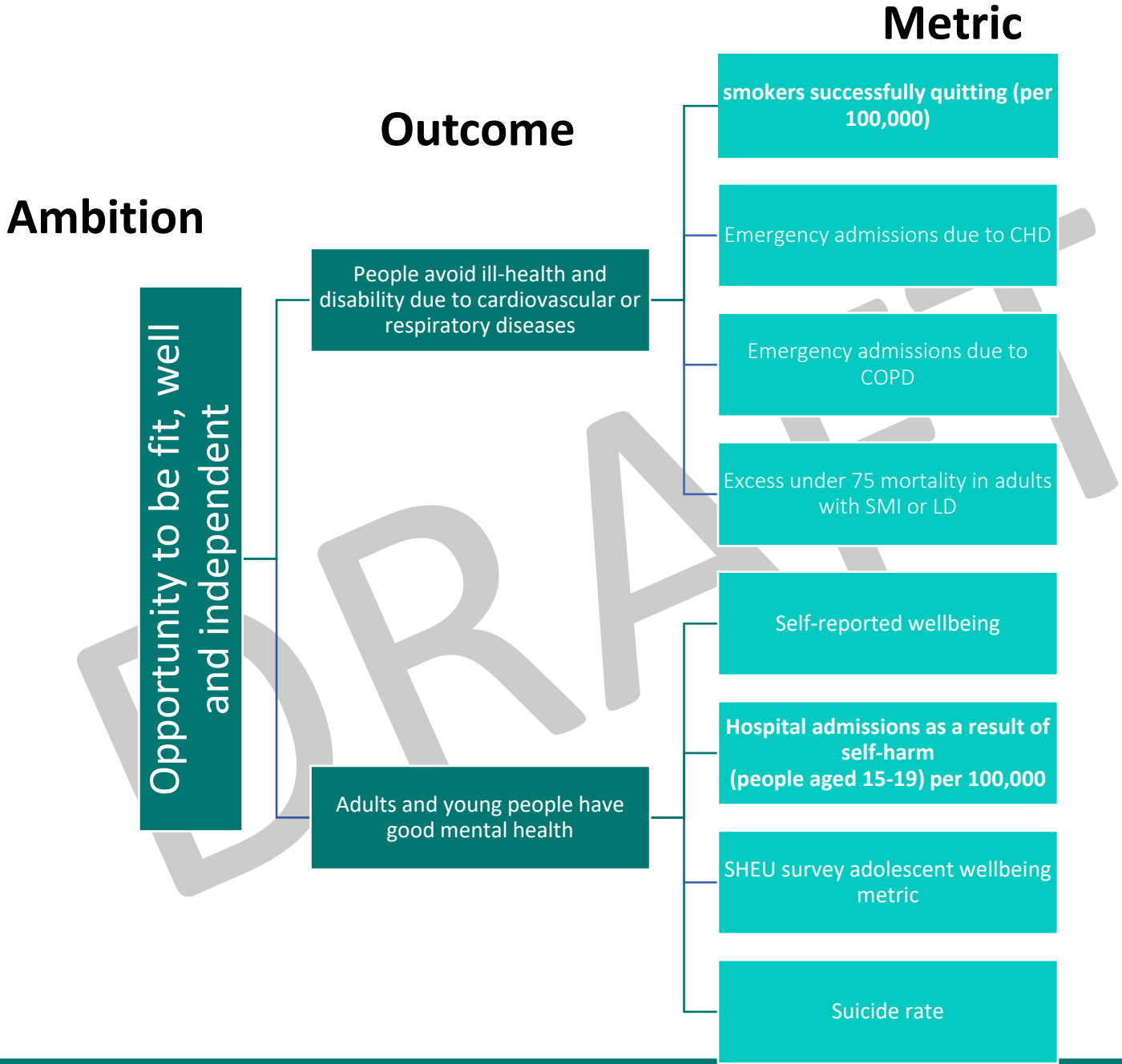


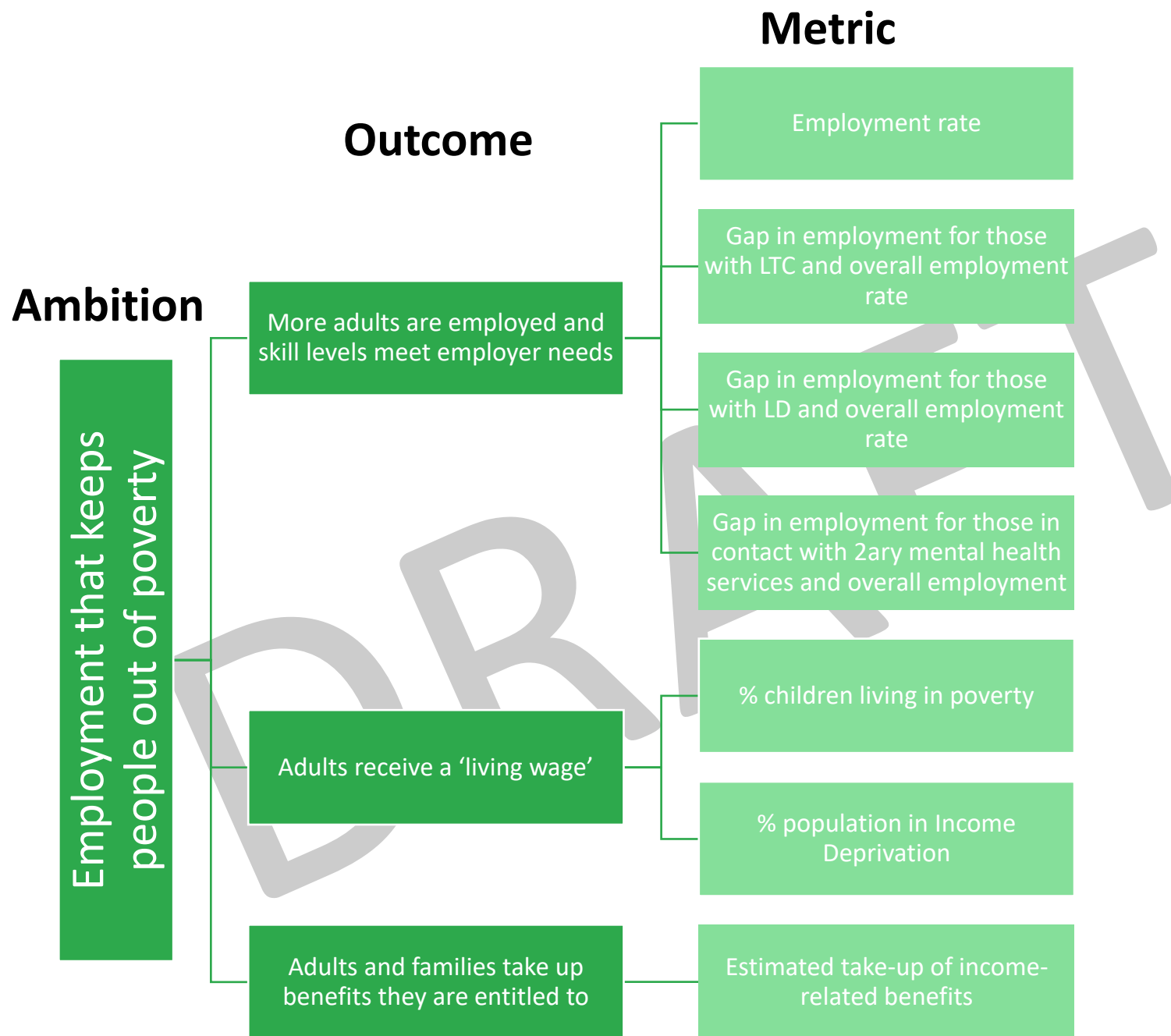
Ambition

Outcome

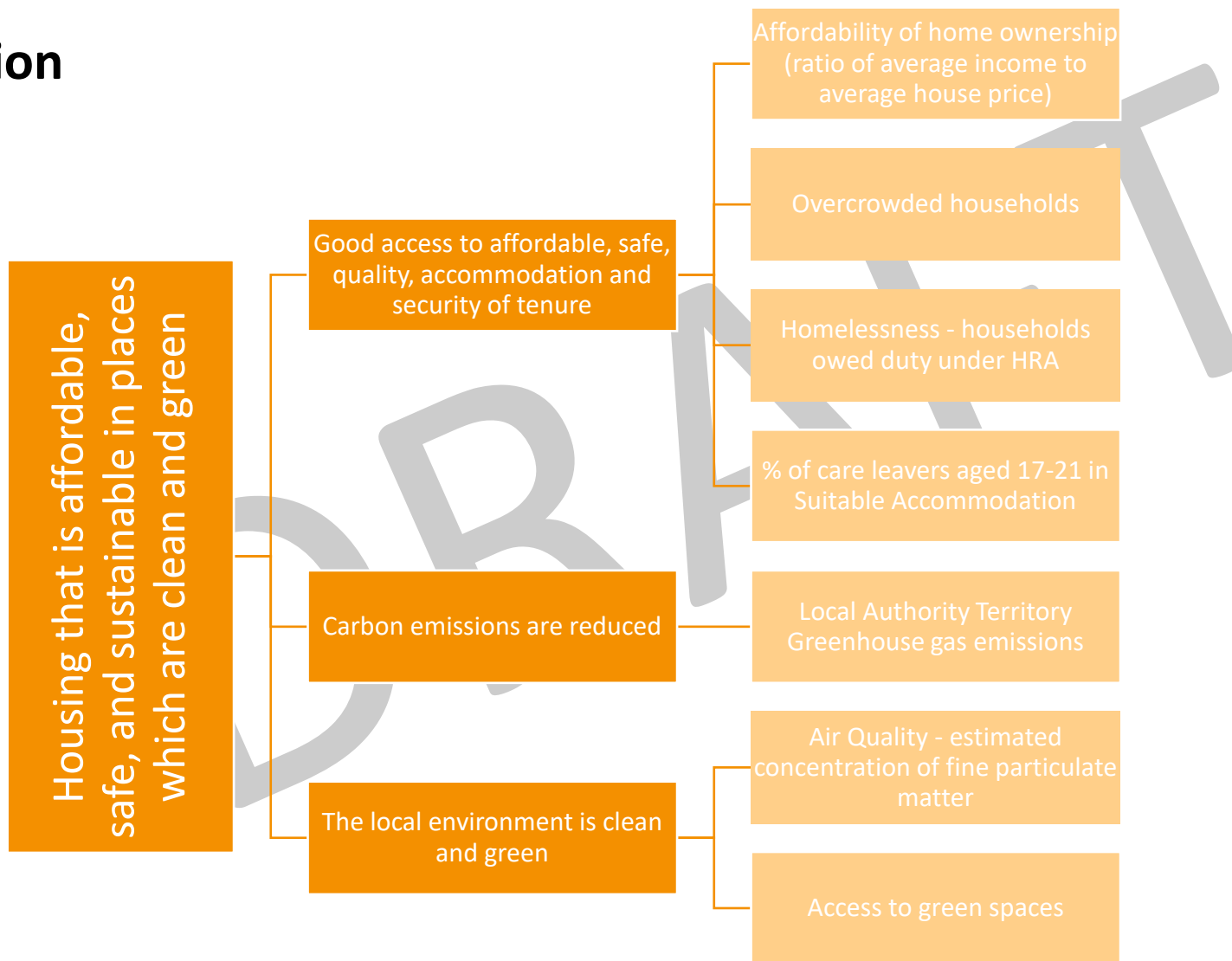
Metric







Ambition



Ambition

To feel safe in their homes
and when out and about

Outcome

Residents are safe in their homes on public transport and in public places

Children and young people are safe and protected from harm

Metric

Violent crime - violent offences per 1,000 population

Total of selected serious offences involving a knife

Domestic abuse – number of re-referrals to MARAC

% safeguarding enquiries that follow MSP (making safeguarding personal)

Children entering youth justice system

admissions caused by unintentional and deliberate injuries in young people (15-24) per 10,000

Children killed or seriously injured (KSI) on England's roads per 100,000

Early Help Assessments carried out by partnership

Ambition

Outcome

Metric

Connected to their families and friends

People feel well connected to family, friends and their community

Social isolation: percentage of adult social care users who have as much social contact as they would like

Public transport supports people to connect with family and friends

Number of concessionary travel claims made

People have good access and skills to use new technology for social links to family and friends

Digital Exclusion Index

Ambition

The chance for a fresh start
when things go wrong

Outcome

Ex offenders are supported back into civilian life

People have easy access to support for addictions and take it up

Rough sleeping rates are low

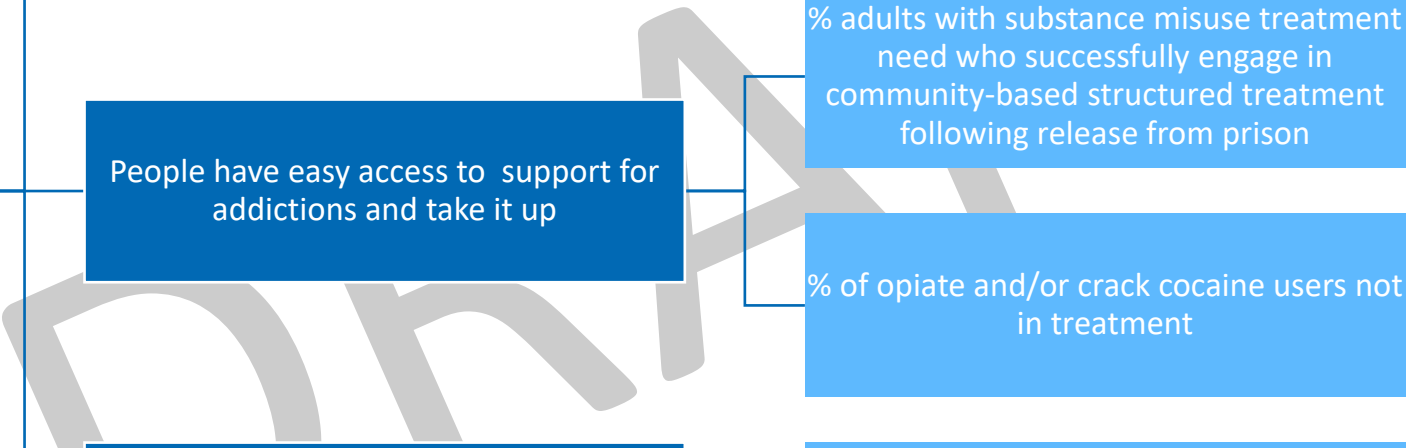
Metric

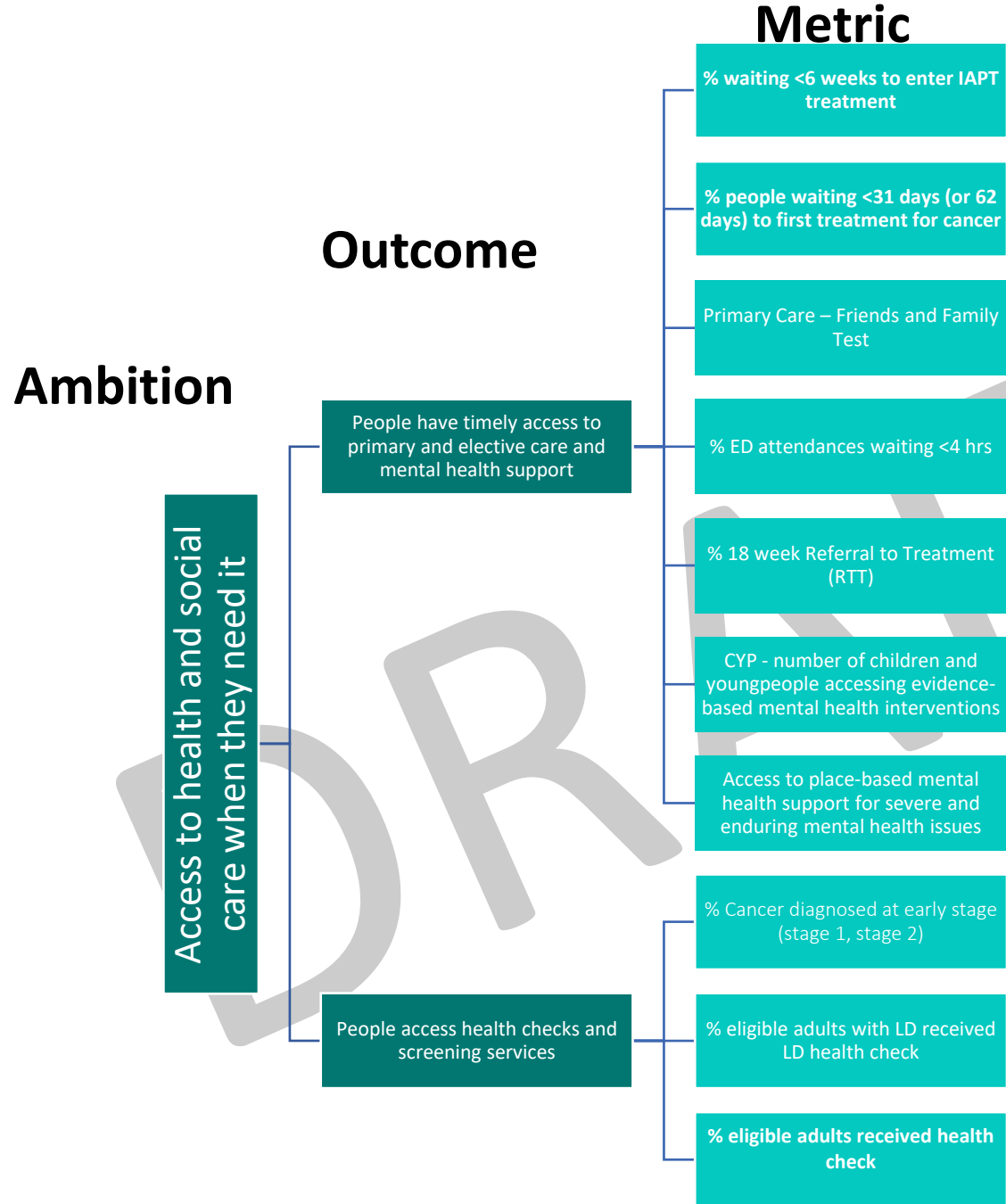
% offenders who re-offend

% adults with substance misuse treatment need who successfully engage in community-based structured treatment following release from prison

% of opiate and/or crack cocaine users not in treatment

Number of rough sleepers



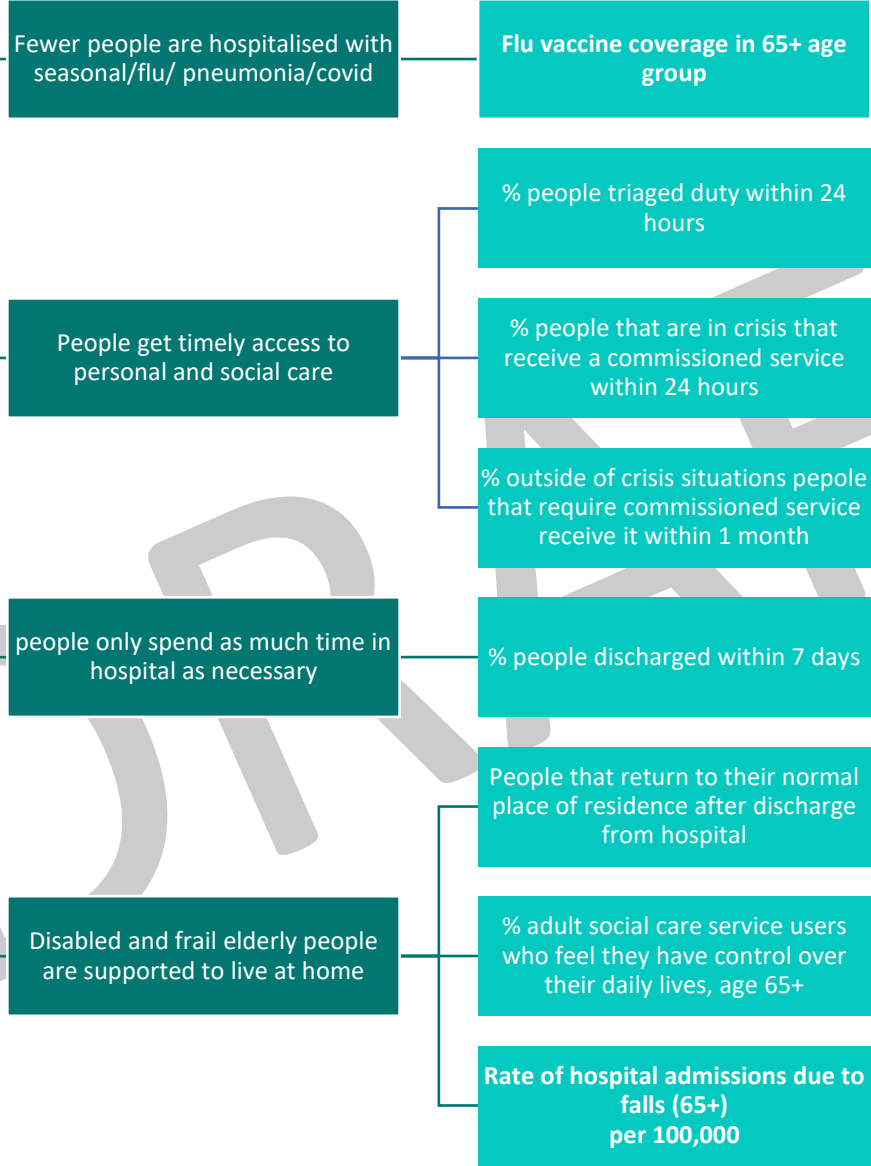


Ambition

Outcome

Metric

Access to health and social care when they need it



Ambition

People are accepted and valued simply for who they are

Outcome

Older people, those with care needs and those at end of life are treated with dignity and respect

People are a valued part of their community and not socially isolated

Northamptonshire respects and celebrates diversity and people feel valued

Metric

Metric requires development

Metric requires development

Metric requires development